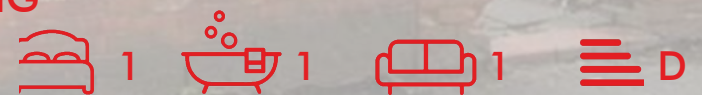




14a Tewkesbury Drive, Manchester, M25 0HG

£800 PCM







Area Map



## Details:

We are pleased to offer this generous size one bedroom first floor flat. Conveniently located in the popular neighborhood of Sedgley Park, it is within walking distance of bus routes, shops, schools and local amenities. It is also a short drive from the City Centre and the M60 motorway network.

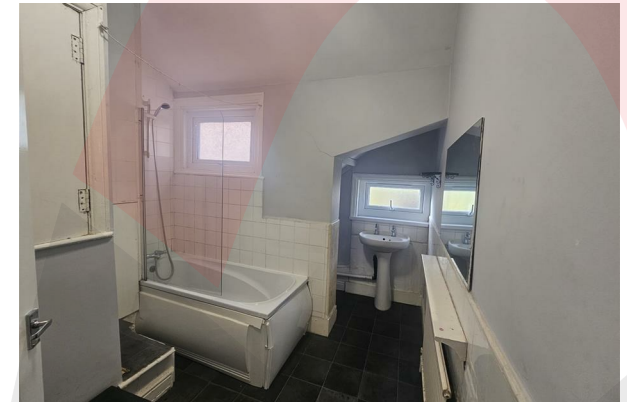
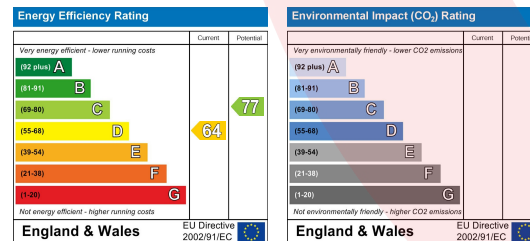
The flat comprises good size living room, recently fitted eat-in kitchen, double bedroom, bathroom with sink and bath with shower over and separate WC. The flat has been modernised and also benefits from gas central heating and double glazing.

Viewings are highly recommended.

## Viewing

Please contact us on 0161 773 3978 if you wish to arrange a viewing appointment for this property or require further information.

## Energy Efficiency Graph



These particulars, whilst believed to be accurate are set out as a general outline only for guidance and do not constitute any part of an offer or contract. Intending purchasers should not rely on them as statements of representation of fact, but must satisfy themselves by inspection or otherwise as to their accuracy. No person in this firm's employment has the authority to make or give any representation or warranty in respect of the property.

3 Middleton Road, Manchester, M8 5DT

T: 0161 773 3978 | F: 0161 211 3573 | [enquiries@amcomanagement.com](mailto:enquiries@amcomanagement.com)

[www.amcomanagement.com](http://www.amcomanagement.com)

Zoopa



rightmove

